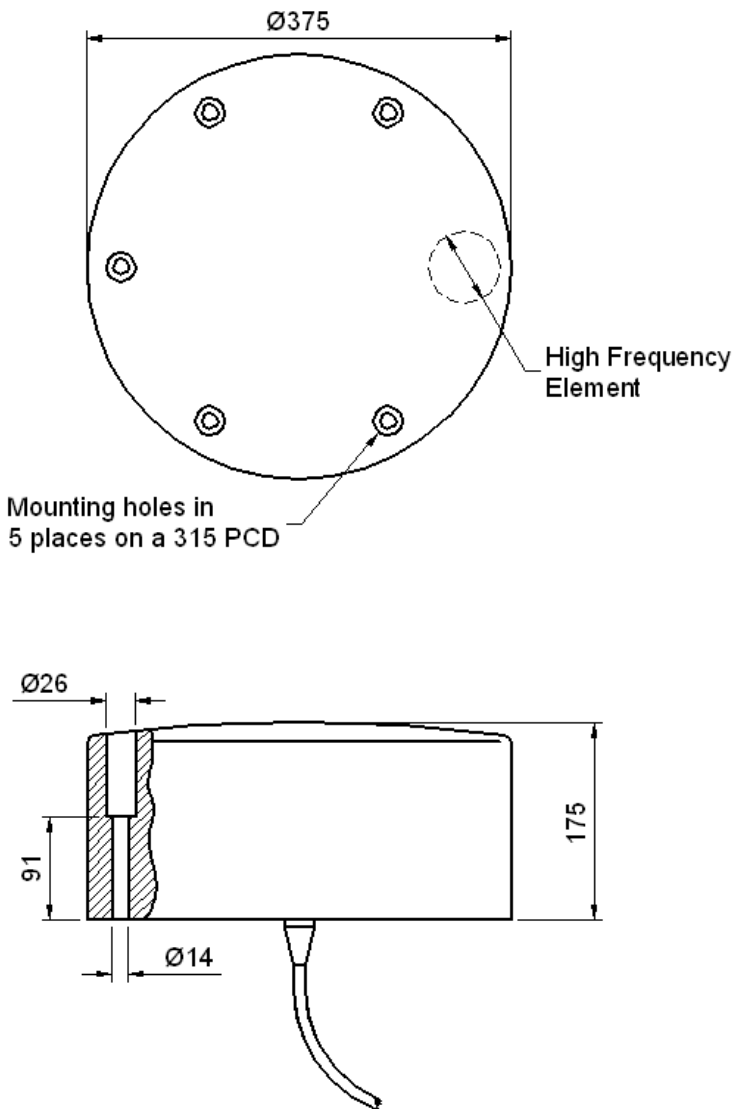
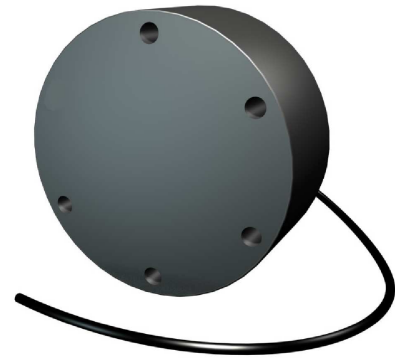


- 12/200 & 12/210 KHZ TRANSDUCER
- NAVIGATION : SURVEYING
- LOW SIDE LOBES
- LONG RANGE ECHO SOUNDING
- TOWED BODY CAPABILITY
- NEPCAST® PU MOULDED HOUSING



All dimensions in mm

The T196 & T197 are both high performance, dual frequency transducers offering a versatile sounding system with high resolution and excellent range performance.

The design features both HIGH and LOW frequency sections combined in a single housing.

The combination of both frequencies in the same unit, provides the echo-sounder manufacturer and hydrographer with the flexibility to select a system to meet the desired survey requirements of resolution, range, silt penetration and beam pattern.

The NEPTCAST® over-moulded polyurethane housing provides a mechanically robust, corrosion free transducer for hull or over-side mounting.

This product is stocked by our world-wide distributor

**GSE Rentals Ltd, Aberdeen**  
Tel: +44 (0) 1224 771247  
Fax: +44 (0) 1224 723116  
E Mail: [info@gserentals.co.uk](mailto:info@gserentals.co.uk)

# MODEL T196 & T197

## Dual Frequency Transducers

### Technical Specification

Neptune Sonar	T196		T197		Type Number
Frequency Options	12	200	12	210	kHz
Beam Angle (-3dB)	20	8	20	7.5	Degrees Conical
Transmit Sensitivity	167	175	167	174	dB re uPa @ 1m
Receive Sensitivity	-173	-186	-173	-187	dB re V/uPa
Input Power	5000	300	5000	300	Watts
Bandwidth	1.5	20	1.5	28	kHz
Nominal Impedance	100	100	100	100	Ohms

Transducer impedance can be adjusted to suit customers specification

Standard Depth Rating	600 Metres
(Optional) Depth Rating	1500 Metres
Cable Length	10 Metres Standard (Additional lengths supplied to order)
Cable Type	Polyurethane Ø12mm 4 Core Screened
Storage Temperature	-40 to +80 °C
Operating Temperature	-5 to +70 °C

Data illustrated is taken from actual in-water measurements