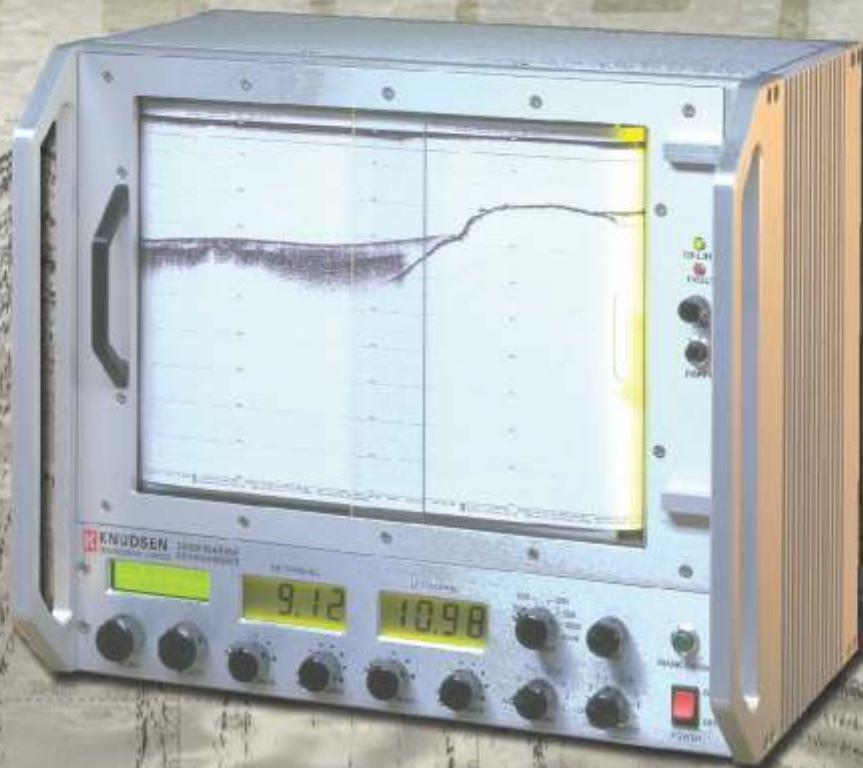


KNUDSEN

Next generation now available!

CHIRP **320Mc**



Proudly Made
In CANADA





CHIRP 320Mc



The original 320M - well known and respected for its outstanding performance and longevity in the survey market - now has even more to offer to the research community following a complete technology refresh. With twice as much power, and the addition of chirp and correlation processing features, the new 320Mc joins the Chirp series of next generation Knudsen products for sub-bottom, ocean research applications.

As well as all standard features of the Chirp series, the new 320Mc also provides a standard built-in 32 grayscale printer equipped with built-in system computer and Knudsen SounderSuite Software to allow display/control and collection of all data records both internally and on other network computers.

Technical Specifications: *(subject to change without notice):*

Available Channels

- 2 channels

Frequency

- All channels: 3.5kHz - 210kHz

Output Power

- Up to 1kW on Channel 1
- Up to 2kW on Channel 2

Input Power

- 12 - 30 VDC

Pulse Length

- Up to 64ms

Gain

- Manual, automatic (AGC), and time varied (TVG)
- 96db range of programmable analog gain

Ranges

- 5, 10, 20, 50, 100, 200, 500, 1000, 2000, 5000

Phasing

- Manual and automatic (up to 50% overlaps)

Units

- Meters, Feet, or Fathoms

Resolution

- 1cm (0-99.99), 1dm (100-999.9), 1m (>1000)
- 1/100ft (0-99.99), 1/10ft (100-999.9), 1ft (>1000)
- 1/100fm (0-99.99), 1/10fm (100-999.9), 1fm (>1000)

Sound Velocity

- 1300 - 1800 m/s Resolution 1m/s
- 4265 - 5906 ft/s Resolution 1ft/s
- 710 - 984 fm/s Resolution 1 fm/s

Draft

- 0-100m Resolution 1cm
- 0-328ft Resolution 0.01ft
- 0-54fm Resolution 0.01fm

Printer Specifications

- 32 grayscale, 203DPI thermal printhead
- 21 cm paper height
- Paper advance control

Interfaces

- USB 2.0 Full Speed (12Mbps)
- 2 x RS-232, 1 x RS-232/422/485
- DVI (LCD connection)
- Ethernet interface

Output Data

- Full resolution envelope data in KEB binary format and XTF (for sidescan only)
- Industry standard SEG-Y in 16-bit fixed point in user selected raw, filtered, or envelope detected form
- User configurable ASCII digital depth strings

Data Storage

- Internal 16GB (min) Solid State Disk
- Minimum 1 month continuous echogram record

Dimensions

- 419 mm (16.5") x 355mm(14") x 241mm (9.5")

Weight

- 16kg (35lbs)

Installation

- Bulkhead or 19" rack mountable
- Interchangeable connector panel location

Operating Temperature

- 0 - 50 °C

Additional Features

- Frequency agility on all channels
- Chirp and correlation processing
- Transmit signal generation control
- Advanced digital filter control
- Built-in drivers for all popular GPS
- Built-in test signal generator
- Compatible with industry standard dataloggers and processing software (Hypack, QINSy, SonarWiz)
- Heave compensated echogram

Options

- Sidescan option
- Network option for multiple PC operation
- Remote Display Indicators
- EchoSim Sonar Signal Simulator

SounderSuite Software (included)

- Windows Vista, XP and 2000 compatible
- Easy to use Graphical User Interface (GUI)
- Postsurvey Display and Printing Software
- Large Digitized Depth Display