

SL 3.3, 1500 Chamber & HP Air Storage

Description:

The SL 3.3 layout features a 1500 deck decompression chamber and an HP air storage area which is separated by a partitioned wall fitted with an access door. The HP storage area

which is ventilated by a forced draft fan includes a 2 x 12 cylinder gas banks in a galvanised handling frame with a high capacity HP compressor. The DDC area is fully air conditioned.

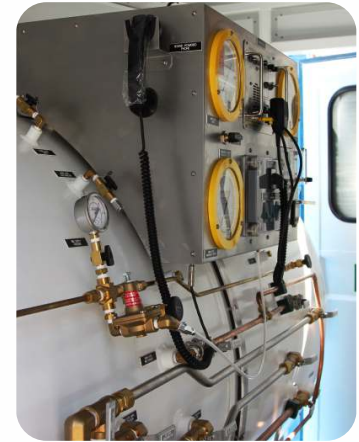
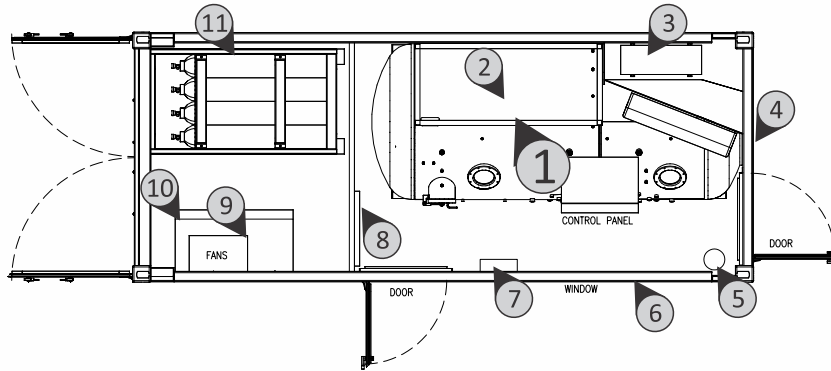


Illustration:



No:	Description:	No:	Description:
1.	A1500 Chamber	7.	CABA
2.	Overhead Storage	8.	Chamber Regular Panel
3.	Air-Conditioner	9.	Extraction Fans
4.	External Chamber Access	10.	HP Compressor
5.	Fire Extinguisher	11.	2 x 12 Cylinder Gas Banks
6.	Insulated Wall		

Order Detail:

SL 3.3 DCON 1500 Chamber & 12 Cylinder Air Bank	D-CDS-389
HP Compressor Integrated into HP Storage Space	D-CDS-389-01