

Launch and Recovery Load Monitoring System: 8-12 ton

Description:

The primary function of the Bell Load Monitor is to monitor the dynamic loads applied to a Bell's LARS and to alert the operator when the loads have reached or exceeded the safe operating limits for the system. The system comprises of multiple interconnected components and equipment to operate.

Features:

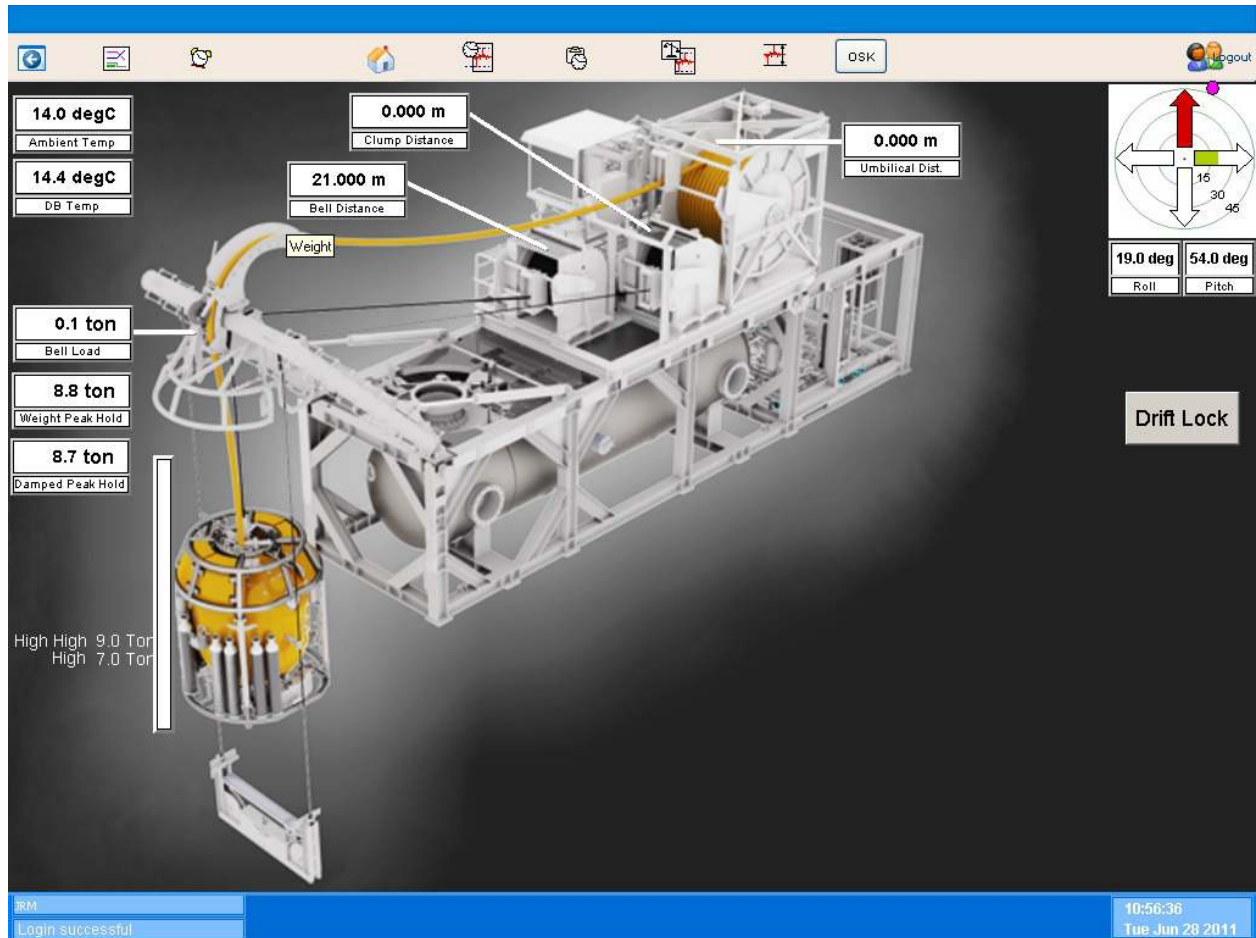
The system measures, records and displays the parameters listed below:

- Real time load applied to the Main Wire Rope
- Maximum Load applied since reset
- Maximum damped load applied since reset
- Bell distance travelled (Bell Wire Counter)
- Clump Weight distance travelled (Guide Wire Counter)

- Umbilical distance (Umbilical Wire Counter)
- Roll angle of the vessel
- Pitch angle of the vessel
- Heave of the Bell LARS
- Ambient air temperature
- Temperature of the deck mounted PLC enclosure

Specifications:

Power Source:
100 – 240Vac 50/60Hz



Order Detail:

LARS Load Monitoring System : 8-12 ton	D-EE-194
LARS Monitoring System line out counter upgrade : 8-12 ton	D-EE-194-01